

# GREAT BEND VISITORS GUIDE

KANSAS



THE CITY OF

## GREAT BEND

CONVENTION & VISITORS BUREAU

EXPLOREGREATBEND.COM



@EXPLOREGREATBEND





**KitchenAid**  
BLACK STAINLESS

**Refrigerator**  
Made in Amara, Iowa  
**Dishwasher**  
Made in Findlay, Ohio  
**Stove**  
Made in Tulsa, Oklahoma



Made in  
Denver,  
Colorado



**Washer**  
Made in Clyde, Ohio  
**Dryer**  
Made in Marion, Ohio



**0  
Down  
0%  
Interest**

Financing Available  
See Store for Details



Made in Albuquerque, New Mexico

**CORSICANA BEDDING**  
Delivering Quality and Value Since 1971  
Made in Corsicana, Texas



Recliners from Small up to the  
Atlas Big Man Chair  
(400 lbs. capacity)  
Made in Cleveland, Tennessee



**England**  
A L.A. BOUT COMPANY

Custom Furniture  
in 30 Days or Less  
Made in New Tazell, Tennessee



**Great Bend Appliance,**

**Furniture & SLEEP SOURCE**  
YOUR MATTRESS Export



2301 10th, Great Bend  
620-792-3999

Check Out Our Web Page: [www.greatbendappliance.com](http://www.greatbendappliance.com)  
Hours: Mon.-Fri. 9 - 6 • Sat. 9 - 5



**Farmers Bank  
and Trust** Member FDIC



**Experience Matters**

*Serving Central Kansas For Over 110 Years*

**Home Loans**

**Real Estate Loans**

**Business and SBA Loans**

**Agricultural Loans**

**Oil & Gas Loans**

[www.farmersbankks.com](http://www.farmersbankks.com)

**620.792.2411**

Great Bend • Albert • LaCrosse • Larned • Kinsley  
Bazine • Overland Park



**Our products  
AND People are...**  
*here for you*

3700 10th St • Great Bend, KS 67530  
**620.792.3908 • nex-tech.com**



**We never stop moving.®**



**COLDWELL BANKER**

**SELL REAL ESTATE**



Glenna Achatz and Kimberly Vink  
Owner/Brokers

[cbsre@coldwellbankersell.com](mailto:cbsre@coldwellbankersell.com)

**(620) 792-2566 • (620) 792-8600 FAX**

4000 10th Street • Great Bend, KS 67530

**[www.coldwellbankersell.com](http://www.coldwellbankersell.com)**

An Independently Owned and Operated Member of  
Coldwell Banker Real Estate Corporation



**Your Trusted Real Estate Advisor!**



## WE INVITE YOU TO EXPLORE GREAT BEND!

*Welcome! It is my privilege on behalf of City of Great Bend Council, Staff & Citizens to invite you to explore all that Great Bend has to offer! We have something for everyone, and we take great pride in our area and hope your stay with us is an incredible one!*

*Located in the very center of our state, Great Bend is the perfect sized town to see people you know and can also meet new people every day! Our population is just under 16,000 and we are proud to be the county seat of Barton County and the hub of retail and service in Central Kansas! Great Bend has welcoming neighborhoods, wonderful schools, affordable cost of living, dozens of recreational experiences, low cost or free attractions, unique shopping and friendly restaurants!*

*Our community is built on ag and oil, however our location places us in the middle of 3 wetlands of international importance, therefore bird watching, hunting and vast sightseeing will provide you with the best of Kansas Sunrises and Sunsets! Our charm is great, mainly because your adventures in Great Bend are made up of the wonderful people that live here and the partners that keep it vibrant!*

*Contact us for more information on Great Bend, let us roll out the red carpet for you to shop, stay, play, learn and enjoy all the wonders of our town. We want to show you how to truly explore this great area and love the beauty and experience of Great Bend, our home!*

*– Christina Hayes,  
Convention & Visitors Bureau Director/ Community Coordinator*

Special thanks to community members, businesses, Maggie Lee, Jennifer Flick, Emily Kennedy, Joe Trimmer, Dan Witt, City, and numerous others for the photos.

©2020 Great Bend Convention and Visitors Bureau Guide Production: Empire Advertising, Inc.

Carol Schuetze and J. Brown, Garden City, KS, 67846. The GBCVB has made every effort to insure the accuracy of material presented in the guide. However, the Bureau assumes no responsibility or liability for errors, changes or omissions in this guide. Reproduction without permission is strictly prohibited.

## What's inside

- 5 — Celebrate Festivals & Fun
- 15 — Annual Events
- 19 — Visitor Resources
- 20 — Map
- 22 — Shop & Eat
- 23 — Restaurants
- 25 — Hotels & Where To Stay
- 27 — Play
- 34 — Explore Attractions & Activities







## Wetlands Waterpark

2303 MAIN STREET  
620.792.1516

FEATURING: 8 SLIDES, TIPPING BUCKET, SPRAY PARK,  
ZERO-DEPTH SPLASH POOL, CONCESSIONS, BATH HOUSE,  
WATER BALLOON SPLASH STATION & PLENTY OF SHADE!

Visit us!

WWW.GREATBENDWATERPARK.COM

## EXPLORE OUR FREE ZOO



FREE ADMISSION  
2123 MAIN STREET  
GREAT BEND, KS  
OPEN 9AM-4:30 DAILY



THE CITY OF  
**GREAT BEND**

[www.greatbendzoo.com](http://www.greatbendzoo.com)



## GREAT BEND SPORTS COMPLEX

- Regulation Baseball & Softball Fields
- Musco Lighting Systems
- Full Concessions & Restrooms
- Meeting & Officials Rooms
- Batting Cages
- Convenient Parking
- Home of the Great Bend Panthers, Great Bend Bombers, KCAC Baseball & Softball Championships and KSHSAA 2-1A Baseball Championship

Contact the Great Bend Recreation Commission for more information or to Rent the Complex at 620-793-3755





## Celebrate in Great Bend

Explore  
GREAT BEND  
Shop - Stay - Play - Grow  
[www.exploregreatbend.com](http://www.exploregreatbend.com)



**Great Bend Events Center**

With over 12,000 square feet of space (and growing), this facility is ideal for conventions, meetings, expos, weddings! This building is also the home of the Convention & Visitors Bureau which hosts as a Kansas Travel Information Center and to the new Great Bend Economic Development office.

**Event Planning** – For assistance for your meeting, banquet, convention or special event, please contact the Convention & Visitors Bureau at 620-792-2750 or online at [exploregreatbend.com](http://exploregreatbend.com)!

**Great Bend Events Center**



**Great Bend  
"The Christmas City"**

Great Bend glitters and glows each year at Christmas. We invite you to our Christmas City that opens the Saturday after Thanksgiving and through December! Enjoy our small-town charm and various attractions and events that get you in the Christmas spirit.



**Santas Around the World**

Experience Christmas all around the world with these 22 life-sized Santas Around the World created by local artist Loretta Miller. This location also hosts live Santa so that the kids can be sure Santa knows what's on their wish list. See the Annual Holiday Event Calendar for Open Hours, or to request a special viewing call Christina at 620-793-4111.



**Free Ice Skating**

Each year in Jack Kilby Square our synthetic rink is up for holiday fun where the City provides you skates to glide for free! Be sure to see the Holiday Event Guide for hours and schedule!



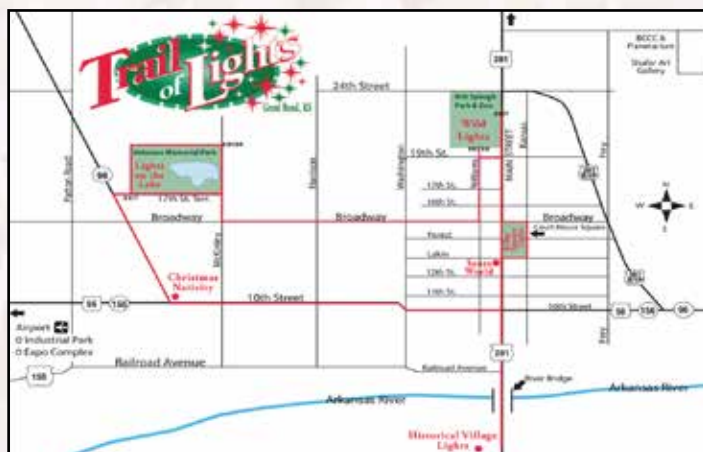
**Christmas Craft Mall**

Since 1987, vendors from all over collaborate to create an annual Christmas Craft Mall! Check out all the locally made items and displays that varies from food, to home goods and décor. Please visit the "Christmas Craft Mall" on Facebook for more information.





## Trail of Lights



For over 25 years, Great Bend has a Trail of Lights that winds through town! It officially opens the Saturday after Thanksgiving and the Public Lands Department gets credit for its beauty! See the Trail Map and enjoy all the areas of Christmas right in Great Bend!

Visit the **ZARAH MALL**



**Find Us On Facebook For Our Daily Lunch  
Specials and A Prime Rib Seated Special  
On Saturday Nights From 5 to 8.**

**1216 Main St. • 620-786-2334**



HEART OF KANSAS MERCANTILE & Pretty Pickles  
1212 Main St. • 620-786-2333 •  Heart of Kansas and Miss Pretty Pickles

## "Eat Sweet, Dream Sweet"

we sell bulk candy, glass bottled soda, nuts



Sweet Dreams  
Candy Shop



1917 Lakin Ave., Great Bend, KS • 620-796-2369



1919 Lakin  
Suite 109

620-282-0135





### Home for the Holidays Festival & Parade

This starts with Small Business Saturday to encourage local shopping and the annual cookie contest in participating stores. The lighted parade is when Santa officially comes to town and always starts at 5:30 pm on Main. It is followed by free ice skating, horsedrawn rides, train displays, living nativity portraits, free hot dogs, hot chocolate and funnel cakes, and the Mayor always lights his tree with the help of Santa!

Christmas in Great Bend is truly magical. The stores, the people, the events and the lights create a tradition I look forward to each year! We invite you to create memories in Great Bend!  
 -Christina Hayes

**WHEATLAND ELECTRIC**  
 Delivering Energy for Life  
 A Touchstone Energy Cooperative  
 (620) 793-4223

Hard hats for the job.  
 Soft hearts for the community.

**CRAM VAN**  
 TODAY!

2300 Broadway Great Bend, Kansas 67530

**DQ**

Find us on Facebook Great Bend Dairy Queen... Open All Year Long!  
 dqcakes.com  
 2302 Main • Great Bend, KS • 620-793-8961

It is a new time of caring and we care for folks like you...  
 Make Heart of Kansas your Medical Home

Services Available:  
 • Primary Care • Prescription Programs • Case Management • Dental  
 • Behavioral Health Care • Referrals to Specialists • Farm Worker Programs

**Heart of Kansas**  
 Family Health Care, Inc.  
 "We Care about your Health"

Clinic Hours:  
 Monday, Tuesday, Wednesday & Friday  
 8-12 a.m. 1-5 p.m.  
 Thursday  
 8 a.m. - 7 p.m.

1905 19th Street, Great Bend, KS 67530 • Phone (620) 792-5700 • Fax (620) 792-5742





## SPRING

The first big event in Spring is the Farm & Ranch Expo! This three-day event shows over 500 exhibits! Also in spring, don't miss out on the weekend birdwatching fun "Wings & Wetlands Birding Festival" on odd number years. More Spring fun includes Golden Belt Community Concerts, the Annual Art & Wine Walk and baseball or softball tournaments at the Great Bend Sports Complex!!

THE CITY OF

# GREAT BEND

*Something for  
Every Season!*

## SUMMER

Kick off summer for the K-96 June Jaunt in Great Bend. Cool off at the Wetlands Waterpark and enjoy the weekends of championship drag racing at the Historic SRCA Dragstrip. In July, our firework display is always on the 3rd, and be sure to check out the carnival at the Barton County Fair! Be sure to attend the annual Party in the Park, Great Bend's end of summer Bash!

## WINTER

The Great Bend Trail of Lights holiday displays are the main attraction in Great Bend in the winter! To commence the winter, enjoy the Holiday Parade & festivities along with the "iceless" outdoor skating rink and Santas Around the World! Be sure to pick up your November & December holiday guide!



## YEAR-ROUND

Get a fascinating glimpse of the past at the Barton County Historical Society or enjoy displays illustrating the amazing story of oil and gas production at the Kansas Oil & Gas Museum. Learn something new every day at the Great Bend Zoo and Kansas Wetlands Education Center. Year-round attractions include the Shafter Art Gallery with a rotation of art and artists throughout the year, and the well-rounded season of plays and musicals performed in the historic Crest Theatre.

## PLAN YOUR NEXT EVENT!

Great Bend is the perfect place to plan your next class or family reunion, meeting or convention! With 8 hotels to choose from, Great Bend also has many unique meeting places suitable for large or small groups.

Contact the Great Bend Convention & Visitors Bureau for meeting planning assistance, services and suggestions tailored to your group or event!

## FALL

Cheyenne Bottoms Wildlife Area is a great place to be in the fall due to the sheer volume of migrating birds that can be observed! Aside from birdwatching, fall brings River Riding, the Annual Supercross Shootout and the Great Bend Airport Airfest (which only happens on every three years!)





## KANSAS Oil & Gas Hall of Fame and Museum

Seasonal hours April-September  
Mon-Fri 1-5 pm OR By appointment  
For More Information

Danielle Feist  
Executive Director  
Kansas Oil & Gas Museum  
PO Box 1294 • 5944 10th Street  
Great Bend, KS 67530  
620.793.8301 Office • 620.282.3598 Cell  
dfeist@ksoilandgasmuseum.org



## Heartland FARM

A peaceful farm experience tucked  
away into the Kansas prairie...

Heartland Farm, a ministry of the Dominican Sisters of Peace, is a Christian community committed to working for the healing and care of the Earth and its inhabitants.



### What we do:

Hands-on Workshops  
Gift Shop  
Sustainable Practices  
Earth Spirituality  
Harvest Hosts  
Ecological Farming  
and more...

Alpacas Farm  
Retreats  
Volunteer Programs  
Kids Peace Camp  
Local Food Vendor  
Holistic Healing



1049 Country Road 390, Pawnee Rock, KS 67567  
hfarm@gbta.net heartlandfarm-ks.org

## — EVENTS & FESTIVALS —

# 2020 SCHEDULE OF EVENTS

### JANUARY

- 3-5 – RK Gun Show
- 11 – GB Tribune Health & Wellness Expo
- 18 – Cabin Fever Relief Sale
- 25 – Battle in the Barn
- 25 – Habitat For Humanity's "Barton County's Got Flavor"

### FEBRUARY

- 1 – I Heart GB Promo
- 1 – CASA Chocolate Auction
- 22 – Chamber of Commerce Banquet
- 22 – Battle in the Barn
- 24 – I Heart GB Promo Final Winner Chosen
- 29 – Sunflower Diversified Services Gala

### MARCH

- 5 – Kiwanis Pancake Feed
- 7 – Battle in the Barns
- 12 – Ladies Night Out #1
- 14 – Dilly & Doc Pop Up Market
- 21 – Eagle Radio's Home and Garden Expo
- 21 – YP Casino Night
- 27 – Family Crisis Center's Bunco Night
- 28 – SRCA Chassis Certification

### APRIL

- 8-10 – Great Bend Farm, Ranch & Hemp Expo
- 11 – Stores Pay The Tax Sale
- 24 – Catholic Charities Wine Tasting Event
- 30 – BCC Job Fest
- 29-30 – KCAC Championship Tournament

### MAY

- 1-2 – KCAC Championship Tournament
- 2 – Cinco De Mayo in the Square
- 7 – Art & Wine Walk
- 8-9 – SRCA Points Race #1
- 10 – Mother's Day  
\*Summer Street Stroll Starts
- 22-23 – SRCA Points Race #2
- 28-29 – KSHSAA 2-1A State Baseball Championship

### JUNE

- 1-5 – June Jaunt Monopoly in Stores
- 5-7 – June Jaunt Festival
- 5 – Free Outdoor Movie
- 5-6 – Golden Belt Humane Society Garage Sale
- 5-6 – SRCA Points Race #3
- 18 – Summer Street Stroll with Third Thursday Food Trucks
- 18 – Ladies Night Out #2
- 19-20 – SRCA Points Race #4
- 20 – Dilly & Doc Pop Up Market
- 21 – Father's Day
- 26-27 – SRCA Points Race #5

### JULY

- 3 – City Fireworks Display
- 8-11 – Barton County Fair
- 16 – Summer Street Stroll with Third Thursday Food Trucks
- 16 – Outdoor Movie
- 16 – Summer Sidewalk Sale
- 17-18 – SRCA Points Race #6
- 18 – City Wide Garage Sale
- 24-31 – Christmas in July



Dare to Dream.  
Dream to Fly.



Step 1 -  
Schedule your first flight lesson

Step 2 -  
Have fun and learn to fly

*Centerline Aviation LLC*

Great Bend Airport  
620-796-2130  
[www.fuelwith.us](http://www.fuelwith.us)



THE CITY OF  
**GREAT BEND**  
AIRPORT

9047 6TH ST. | GREAT BEND, KS  
OFFICE: 620.793.4168 | CELL: 620.792.9446  
**KGBD**



KGBD - GREAT BEND MUNICIPAL AIRPORT IS HOME TO:

- Centerline Aviation, LLC
- New Primary Runway 7851'
- No Control Tower
- Popular Mid-America Fuel Stop
- 24-Hour Full & Self Service Fuel
- 50+ Based Aircraft
- Tony's Aerial Service
- B-29 Memorial Plaza

KGBD AIRPORT SERVICES & FEATURES:

- Flight Instruction & Flight Examiner
- Aircraft Maintenance & Repair
- Aircraft Parking
- Hangar Service
- Deluxe Catering
- Aircraft Sales & Brokering
- 24-Hour Fueling Service
- ILS & RNAV Approaches




**GREAT BEND AIRPORT AIRFEST**

**SAVE THE DATE: SEPTEMBER 2021**

**EVERY THREE YEARS, THE GREAT BEND MUNICIPAL AIRPORT TRANSFORMS FOR THIS FAMILY-FUN EVENT!**

Watch Great Bend Army Airfield's history come to life as military warbirds arrive and remember the war-time air base.

Explore the aircraft, visit with military re-enactors, honor our veterans of all wars, enjoy great food, and dance to the music of that era.

For more information, contact the City of Great Bend Airport at (620) 793-4168 or go to [www.greatbendairfest.com](http://www.greatbendairfest.com).










## 2020 EVENTS CONTINUED

### JULY continued

- 25 – Bike Brew Q
- 31 – V.E.T. Leader Conference
- 31 – SRCA Points Race #7

### AUGUST

- 1 – SRCA Points Race #7
- 8 – Party in the Park
- 13 – Free Outdoor Movie
- 14-15 – SRCA Points Race #8
- 28-29 – SRCA Points Race #9

### SEPTEMBER

- 5 – Hahn Supercross Shootout
- 11-12 – SRCA Points Race #10
- 17 – SSS Food Trucks
- 17 – Ladies Night Out #3
- 18-19 – Pontiac Uprising Race
- 22 – GB Tribune Women's Expo
- 24-27 – Lucas Oil Drag Races

### OCTOBER

- 2-3 – F&E Auto Auction
- 3 – Rosewood Rodeo
- 4-10 – Restaurant Week
- 9-10 – SRCA Points Race #11
- 16-17 – Rock-N-Q on the Plains
- 23 – SRCA Points Race #12
- 24 – Downtown Halloween Parade & Zoo Boo
- \* Long Pumpkin Patch Closes

### NOVEMBER

- 7 – Explore GB Month: Grow Great Bend
- 14 – Explore GB Month: Open Houses
- 21 – Explore GB Month: Find A Turkey
- 21 – Explore GB Month: Share Your Favs

### NOVEMBER continued

- 27 – Explore GB Month: Black Friday
- 28 – Home for the Holidays Festival & Parade
- Cookie Contest
- Small Business Saturday
- Explore Great Bend Month Winner Chosen
- Santa's Around the World Opens
- Trail of Lights Begins

### DECEMBER

- 1 – Hometown Rewards Starts
- 20 – Last Day for Santas Around the World
- 20 – Santa leaves for the North Pole
- 30 – Last Day for Ice Skating
- 31 – Trail of Lights End

\*Schedule is subject to change

## 2021 SCHEDULE OF EVENTS

### JANUARY

- 2-4 – RK Gun Show
- 9 – GB Tribune Health & Wellness Expo
- 16 – Cabin Fever Relief Sale
- 23 – Battle in the Barn
- 23 – Habitat For Humanity's "Barton County's Got Flavor"

### FEBRUARY

- 1 – I Heart GB Promo
- 6 – CASA Chocolate Auction
- 20 – Chamber of Commerce Banquet
- 20 – Battle in the Barn
- 22 – I Heart GB Promo Final Winner Chosen

### MARCH

- 6 – Sunflower Diversified Services Gala
- 3 – Kiwanis Pancake Feed
- 6 – Battle in the Barns
- 11 – Ladies Night Out #1
- 13 – Dilly & Doc Pop Up Market
- 20 – Eagle Radio's Home and Garden Expo
- 20 – YP Casino Night
- 26 – Family Crisis Center's Bunco Night
- 27 – SRCA Chassis Certification

### APRIL

- 6-8 – Great Bend Farm, Ranch & Hemp Expo

### APRIL

- 10 – Stores Pay The Tax Sale
- 23-24 – Wings & Wetlands Birding Festival
- 28 – BCC Job Fest
- 28-30 – KCAC Championship Tournament
- 30 – Catholic Charities Wine Tasting Event

### MAY

- 1 – KCAC Championship Tournament
- 1 – Cinco De Mayo in the Square
- 6 – Art & Wine Walk



# Great Bend

## EVENTS CENTER

• YOUR GREAT EVENT VENUE •

3111 10TH STREET • GREAT BEND, KS • 620.792.2750 • EXPLOREGREATBEND.COM

### Ideal For



Corporate  
Events &  
Conferences



Banquets &  
Fundraisers

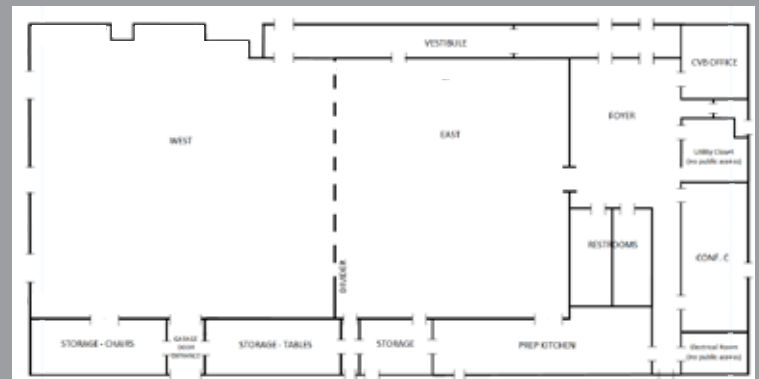


Weddings  
&  
Receptions

**And More!**

THE CITY OF  
**GREAT BEND**

For additional information or a planning packet  
please contact the City of Great Bend CVB staff,  
located in the Great Bend Events Center.



- Over 12,000 sq. feet of meeting space
- Main Ballroom can be divided into two large rooms
- Conference Room available
- AV Equipment: projectors, screens, sound system, microphones
- Stage, podium, tables, chairs in house
- Prep-Kitchen available
- Continued updates scheduled

CONVENIENTLY LOCATED CLOSE TO THESE HOTEL OPTIONS:





## 2021 EVENTS CONTINUED

### MAY continued

- 7-8 – SRCA Points Race #1
- 9 – Mother's Day
- \*Summer Street Stroll Starts
- 21-22 – SRCA Points Race #2
- 27-28 – KSHSAA 2-1A State  
Baseball Championship

### JUNE

- 1-4 – June Jaunt Monopoly in  
Stores
- 4-6 – June Jaunt Festival
- 4 – Free Outdoor Movie
- 4-5 – Golden Belt Humane  
Society Garage Sale
- 4-5 – SRCA Points Race #3
- 17 – Summer Street Stroll with  
Third Thursday Food Trucks
- 17 – Ladies Night Out #2
- 18-19 – SRCA Points Race #4
- 19 – Dilly & Doc Pop Up Market
- 20 – Father's Day
- 25-26 – SRCA Points Race #5

### JULY

- 3 – City Fireworks Display
- 6-10 – Barton County Fair
- 15 – Summer Street Stroll with  
Third Thursday Food Trucks
- 15 – Summer Sidewalk Sale
- 16-17 – SRCA Points Race #6
- 17 – City Wide Garage Sale

### JULY continued

- 23-30 – Christmas in July
- 31 – Bike Brew Q
- 30-31 – SRCA Points Race #7

### AUGUST

- 14 – Party in the Park
- 19 – Free Outdoor Movie
- 20-21 – SRCA Points Race #8
- 27-28 – SRCA Points Race #9

### SEPTEMBER

- 4 – Hahn Supercross Shootout
- 10-11 – SRCA Points Race #10
- 16 – Summer Street Stroll Food  
Trucks
- 18-19 – Pontiac Uprising Race
- 28 – GB Tribune Women's Expo
- \*Lucas Oil Drag Races
- \*Great Bend Airfest

### OCTOBER

- 1-2 – F&E Auto Auction
- 2 – Rosewood Rodeo
- 3-9 – Restaurant Week
- 8-9 – SRCA Points Race #11
- 15-16 – Rock-N-Q on the Planes
- 22 – SRCA Points Race #12
- 30 – Downtown Halloween  
Parade & Zoo Boo
- \* Long Pumpkin Patch Closes

### NOVEMBER

- 6 – Explore GB Month: Grow  
Great Bend
- 13 – Explore GB Month: Open  
Houses
- 20 – Explore GB Month: Find A  
Turkey
- 20 – Explore GB Month: Share  
Your Favs
- 26 – Explore GB Month: Black  
Friday
- 27 – Home for the Holidays  
Festival & Parade
- Cookie Contest
- Small Business Saturday
- Explore Great Bend Month  
Winner Chosen
- Santas Around the World  
Opens
- Trail of Lights Begins

### DECEMBER

- 1 – Hometown Rewards Starts
- 20 – Last Day for Santas Around  
the World
- 19 – Santa leaves for the North  
Pole
- 30 – Last Day for Ice Skating
- 31 – Trail of Lights End

\*Schedule is subject to change



**KELLER**  
REAL ESTATE &  
INSURANCE AGENCY INC.

- RESIDENTIAL • COMMERCIAL
- FARM PROPERTIES

1101 Williams GREAT BEND  
620-792-2128 • 1-800-281-2128

We are a Full-Service Company  
"Serving the Area Since 1968"

www.kelleragency.com



**Community  
Bank OF THE MIDWEST**

*It's hometown banking with hometown people.*

Great Bend Otis Ness City Ellinwood  
620-792-5111 785-387-2241 785-798-3950 620-564-3700

Equal Housing Lender Member FDIC

www.communitybankmidwest.com





PROUD  
SUPPORTER OF  
OUR BYWAY



Claffin, Ellinwood,  
Great Bend & Hoisington

Plan Your Journey To Barton County Today!

3 Wetlands of International Importance  
Bird Migration Seasons

Rich History & Interesting Communities  
Kansas Wetlands Education Center

[www.kansaswetlandsandwildlifescenicbyway.com](http://www.kansaswetlandsandwildlifescenicbyway.com)



Everything you could possibly want  
in a new neighbor.

Say hello to The UPS Store®.

You can count on us for the convenient products and services you need and the customer service you deserve.

- Printing & document finishing
- Custom packing services
- Shipping services
- Mailbox services
- Notary services\*
- Faxing, shredding\*\* and more

We're locally owned and ready to help.

The UPS Store® 

West Side Market  
5523 10th Street  
Great Bend, KS 67530  
(620) 796-5324  
store/7227@theupsstore.com  
theupsstore.com/7227

Hours:  
Mon - Fri 08:00 AM-06:00 PM  
Saturday 09:00 AM-05:00 PM  
Sunday Closed

**\$1 OFF**

ALL PRODUCTS & SERVICES

\*Minimum \$25 purchase. Excludes shipping, storage, metered mail.

\*\*Shredding services:

UPS will shred your documents, but will not shred other items, including credit cards, checks and

documents. Shredding services are provided at participating locations. The UPS Store cannot be

independently owned and operated. © 2010 The UPS Store, Inc.

Offer expires 12/31/20.

The UPS Store® 

\*Available at participating locations. \*\*Visit theupsstore.com/shredding for full details.

The UPS Store® locations are independently owned and operated by franchisees of The UPS Store, Inc. in the USA and by its master licensee and its franchisees in Canada. Products, services, pricing and hours of operation may vary by location. Copyright © 2010 The UPS Store, Inc. All rights reserved. 106410\_22753219

OVER  
700  
BOOTHS

Promoting Agriculture Technology Research and Equipment



# GREAT BEND FARM, RANCH & HEMP EXPO



GREAT BEND CO-OP



APRIL 8, 9, & 10, 2020 • April 7, 8, & 9, 2021 • April 6, 7, & 8, 2022

OFFICE PHONE:

1-866-685-0989 OR 1-785-4262092

DARREN & TANA DALE OWNERS

2370 STATE HWY 61 • BIRD CITY, KS 67731

FAX: 1-785-426-5902

EMAIL: [dales@greatbendfarmandranchexpo.net](mailto:dales@greatbendfarmandranchexpo.net)

[www.greatbendfarmandranchexpo.net](http://www.greatbendfarmandranchexpo.net) & [www.StarExpos.net](http://www.StarExpos.net)



## Annual Events



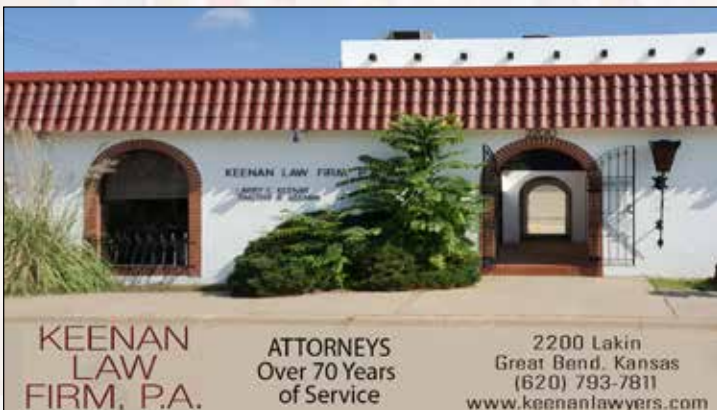
### Art and Wine Walk

This successful free event focuses on shopping, art and of course wine! Guests stroll through various businesses downtown, while tasting wine and appetizers. Pick up your map at the downtown businesses or find the event on Facebook at Explore Great Bend.



### Great Bend Farm, Ranch & Hemp Expo

Join us in Great Bend to see the latest and greatest in agricultural technology. This event has over 500 vendors to ensure you are providing the best for your farm life. [www.greatbendfarmandranchexpo.net](http://www.greatbendfarmandranchexpo.net).



### Cinco de Mayo

This cultural celebration comes to life in Jack Kilby square for a parade, authentic Mexican food, dancing, music and so much more! Starts at 11 am – Find out more information @ ExploreGreatBend.

### Cinco de Mayo



"Our Annual Events are great because there is something for everyone and it's an opportunity to be part of our community"  
 -Mayor Cody Schmidt



## When You Think Trucks



**DOONAN**  
DOONAN PETERBILT OF GREAT BEND



**Sales • Service**  
**24 Hour Wrecking & Towing**  
(620) 792-2491 1-800-734-0689  
Hwy. 56 & 156 Great Bend, KS 67530  
[www.doonantruck.com](http://www.doonantruck.com)

## J & L Coins and Jewelry

Hours:  
Mon. Fri. 10:00-4:00



### Welcome!

Being a family-owned and operated business, we're able to offer you that personal touch you've been looking for. Our goal is to always make all of our customers happy, and we believe in treating each customer like a part of our family. We look forward to hearing from you soon! And when you're in Great Bend we hope you come in and visit.

### Our Products & Services

- Jewelry Design and Repair
- Pawn
- Guns and Ammo
- Jewelry
- Coins
- Collectibles
- Electronics
- Watch Batteries and Repair
- Buy/Sell Gold, Silver, Platinum
- Body Jewelry & Piercing Supplies

[www.jlcoinsandjewelry.com](http://www.jlcoinsandjewelry.com)

1203 Main P.O. Box 1363 • Great Bend, KS 67530 • 620-793-6732 • [jlcoins@sbcglobal.net](mailto:jlcoins@sbcglobal.net)



2010 10th • Great Bend, KS 67530  
620-793-6399

**TWO LOCATIONS  
FOR YOUR  
CONVENIENCE**

**Z's Liquor**



1906 Main • Great Bend, KS 67530  
620-792-8470

## CHARLIE'S PLACE Great Bend

1109 Main Street  
620-793-8668



- Free Nacho Bar Friday 5-8 p.m.
- Cold Beer
- Cocktails
- Cold Shots
- Snacks – Pizza
- Drink Special Every Night
- Lotto and Video Texas Hold'em
- WiFi

*Live Music  
Once a Month*

*Birthday Friday –  
1st Friday of Every Month*

*Happy Hour 5-8  
Mon.-Fri.*

Open Mon.-Fri. 4pm-2am; Sat. 7pm-2am



**NEVER A COVER  
CHARGE**



**Barbecue Grill Available  
on the Patio**





### June Jaunt

This three-day festival is part of a regional collaboration that provides something for everyone! Free Outdoor Movies, Cruise Night & Car Show, Jumbo Yard Games, Live Music, Beer Garden, Magical entertainment, outdoor painting, historical tours and so much more! Visit [k96junejaunt.com](http://k96junejaunt.com) for more information!

### June Jaunt



### City Band Concerts

Various local musicians join forces for several summer city band concerts on the Thelma Harms Stage in the Bandshell at Jack Kilby Square! Bring your lawn chair or blanket to enjoy the free music and entertainment.



### Summer Street Stroll Farmers Market

Garden staples, home baked goods, and other local finds are available for purchase at Jack Kilby Square. Open May through October! Join in on Third Thursdays as the Food Trucks come and feed you dinner while you stroll for fresh, local ingredients.

### Summer Street Stroll Farmers Market



Shop at our many unique retailers and boutiques. Stay at any of our hotels. Play in our parks and zoo! Enjoy yourself at our festivals. There's so much when you chose to Explore!

-Allene Owen





### Party in the Park

We end every summer with a bash, the second Saturday in August at Veterans Memorial Park. This festival includes an obstacle mud run, mud volleyball, a car show, mega kite display, wet/dry parade, eating contest, concert and fireworks! For the full schedule of events find us on Facebook at Explore Great Bend!

### Party in the Park



Come join us for fun in Great Bend! Our small town charm and friendly people won't disappoint.  
-Joe Andrasek, former mayor



### Zoo Boo & the Downtown Halloween Parade

Each year the City hosts the annual Zoo Boo at Great Bend Brit Spaugh Zoo. Tricks and treats are made available as a safe alternate to Trick or Treating. The Downtown Halloween Parade always starts at 11am in Jack Kilby Square and Zoo Boo starts at 5:30 pm both events are always the Saturday before Halloween! For more information check out the events pages at Explore Great Bend on Facebook!



### Home for the Holidays Festivals & Parades

As the Christmas City, this festival kicks off our Christmas season! To see more information on this festival, see page 7 in this guide.



## CAMPING & RV PARKS

### All Season Mobile Home Park

4 NW 30 Rd. • 620.793.9601

Amenities: Full hookups, showers, cable & wifi, storm shelter, private patios

### Cottonwood Grove RV Park

2800 N Main Street #4 • 620.792.4558

Amenities: Full hookups & cable

### Finer Mobile Park

550 19th St. #40 • 620.792.5803

Amenities: Full hookups & storm shelter

### Kiowa Kamp Grounds

517 Kiowa Rd. • 620.793.3160

Amenities: Full hookups

### Camping Area at

### Cheyenne Bottoms Wildlife Area

NE 40 Rd. (1 Mile East of Headquarters)

# VISITOR RESOURCES

## ENTERTAINMENT & FUN

### Auto Racing

SRCA Dragstrip

455 W Barton County Rd. • 620.792.5079

### Bowling & Mini-Golf

Walnut Bowl

3101 N Washington Ave. • 620.793.9400

### Galleries

Great Bend Public Library

1409 Williams St. • 620.792.2409

Shafer Art Gallery - BCC Campus

245 NE 30 Rd. • 620.792.9342

### Roller Skating & Laser Tag

Up-N-Rolling

4805 10th St. • 620.617.0192

### Library

Great Bend Public Library

1409 Williams St. • 620.792.2409

### Theaters

Crest Theater (live)

1905 Lakin Ave. • 620.792.4228

Golden Belt Cinema 6 (movies)

1222 Kansas Ave. • 620.792.5769

## PRINTING & SHIPPING

### Printers

Golden Belt Printer

1125 US-281 Bypass • 620.793.6351

Office Products, Inc.

1204 Main St. • 620.793.8479

Precision Printing & Supply

2118 Main St. • 620.793.8252

Thill Printing Co. Inc.

2109 Washington Ave. • 620.793.8866

### Shipping

Great Bend Post Office

2100 16th St. • 800.275.8777

UPS Customer Center

2316 9th St. • 800.742.5877

UPS Store in Westside Market

5523 10th St. • 620.792.1321

## FITNESS

Membership/Fee Based

### Anytime Fitness

3721 10th St. • 620.793.8700

Big Bend Batters Box

2207 Washington Ave. • 620.282.8159

Club 1 Fitness

3805 Broadway Ave. • 620.792.1366

Great Bend Recreation Commission

Cavanaugh Wellness Center

1214 Stone St. • 620.793.9755

The Fieldhouse

2817 9th St. • 620.603.8583

Image Total Fitness

2100 Kansas Ave. • 620.282.1607

Inspire Fitness

1904 12th St. • 620.923.6195

Thompson Gymnastics

803 Jefferson St. • 620.617.2457

Yoga Central of Great Bend

6003 10th St. • 620.617.4142

Free Public Facilities:

Arkansas River Trails

South Washington Ave. • 620.793.4111

Great Bend Brit Spaugh Zoo & Park

2123 Main St. • 620.793.4111

Great Bend Recreation Commission

Gym & Auditorium

1214 Stone St. • 620.793.3755

Activity Center

2715 18th St. • 620.793.3755

Hike & Bike Path

308 W Barton County Rd. • 620.793.4111

Kansas Wetland Education Center

Trails

592 NE K-156 Hwy. • 877.243.9268

Veterans Memorial Park

17th St. Terrace • 620.793.4111

## TRANSPORTATION

### Ground Transportation

Enterprise

2110 10th St. • 620.793.9992

The Cab & Mini-Bus Service

2005 Kansas Ave. • 620.792.3859

Uber

Download the mobile app from the App Store and enjoy!

### Private Air Transportation

Centerline Aviation

9047 6t St. • 620.792.2130

Call to schedule your private flight today!

## RECREATIONAL RESOURCES

### ATV/River Rides

Arkansas River

Entrance

South Washington Ave. • 620.793.4111

### Ball Park

See Parks & Sports Complex page

### Biking

Off Road:

Arkansas River

South Washington Ave. • 620.793.4111

Cheyenne Bottoms

204 NE 60 Rd. • 620.793.3066

### Biking (continued)

Lake Barton

673 N US-281 Hwy. • 620.653.4255

Paved:

River Hike & Bike

Trail

308 W Barton County Rd. • 620.793.4111

### Dog Park

Great Bend

Bark Park

Veterans Memorial Park

17th St. Terrace • 620.793.4111

### Fishing

Stone Lake

South Washington Ave. & Railroad Ave. • 620.793.4111

Veterans

Memorial Park

17th St. Terrace • 620.793.4111

### Golf

Lake Barton Golf

Course

673 N US-281 Hwy. • 620.653.4255

The Club at

Stoneridge

1438 24th St. • 620.792.4303

### Hiking

Arkansas River

Trails

South Washington Ave. • 620.793.4111

Cheyenne Bot-

tombs

240 NE 60 Rd. • 620.793.3066

Lake Barton

673 N US-281 Hwy. • 620.653.4255

River Hike & Bike

Trail

308 W Barton County Rd. • 620.793.4111

### Paddling

Arkansas River

Entrance

South Washington Ave. • 620.793.4111

### Paddling

(continued)

Cheyenne Bottoms

240 NE 60 Rd. • 620.793.3066

Stone Lake

South Washington Ave. & Railroad Ave. • 620.793.4111

### Skating

Up N Rollin Skate

Center

4805 10th St. • 620.617.0192

Iceless Skating

Rink (seasonal)

Jack Kilby Square:

1400 Main St. • 620.793.4111

### Swimming (Indoor)

Club 1 Fitness

3805 Broadway Ave. • 620.792.1366

### Swimming (Outdoor)

Club West

5201 Timber Creek Rd. • 620.793.8721

Great Bend Wetlands

Waterpark

2303 Main St. • 620.792.1516

The Club at Ston-

eridge

1438 24th St. • 620.792.4303

### Tennis Courts

Shannon Schartz

Tennis Courts

Veterans Memorial Park

17th St. Terrace • 620.793.4111



## Community Resources

- 1 Great Bend City Hall
- 2 Barton County Courthouse
- 3 Great Bend Chamber of Commerce
- 4 Kansas Travel Information Center
- 5 Great Bend Police Station
- 6 KU Med at St. Rose
- 7 KU Med at St. Rose
- 8 Great Bend Convention & Visitors Bureau/  
Great Bend Events Center
- 9 Barton County Sheriff's Office
- 10 Surgical & Diagnostic Center of Great Bend
- 11 The Front Door
- 12 US Post Office
- 13 Great Bend Public Library
- 14 Barton Community College
- 15 Great Bend Airport
- 16 Great Bend Expo Complex
- 17 KU Med at Great Bend

## Lodging

- 1 Baltzell Lodge
- 2 Best Western Angus Inn
- 3 Super 8
- 4 Days Inn
- 5 Holiday Inn & Express
- 6 Traveler's Budget Inn
- 7 Travelodge

## Recreation

- 1 Great Bend Sports Complex
- 2 Great Bend Recreation Commission
- 3 Harms Ball Complex
- 4 Lake Barton Golf Course
- 5 Cavanaugh Soccer Fields
- 6 Stone Lake/Arkansas River Entrance
- 7 Stoneridge Country Club
- 8 Veteran's Memorial Park
- 9 Golden Belt Cinema 6 Movie Theater
- 10 Walnut Bowl/Mini Golf

## Attractions

- 1 B-29 Memorial Plaza – 9047 6th Street
- 2 Barton Community College Shafer Art Gallery/Planetarium
- 3 Barton County Historical Society Museum and Village
- 4 SRCA Dragstrip – 455 W Barton County Road
- 5 Great Bend Brit Spagh Zoo/ The Wetlands Aquatic Center
- 6 Jack Kilby Square
- 7 Kansas Oil & Gas Museum and Hall of Fame
- 8 Kansas Wetlands Education Center

# Community Resources

- 1 Great Bend City Hall
- 2 Barton County Courthouse
- 3 Great Bend Chamber of Commerce
- 4 Kansas Travel Information Center
- 5 Great Bend Police Station
- 6 KU Med at St. Rose
- 7 KU Med at St. Rose
- 8 Great Bend Convention & Visitors Bureau/  
Great Bend Events Center
- 9 Barton County Sheriff's Office
- 10 Surgical & Diagnostic Center of Great Bend
- 11 The Front Door



# Resources

*Explore*  
**GREAT BEND**  
*Shop - Stay - Play - Grow*

1209 Williams  
Great Bend, KS 67530  
(620) 793-4111  
(620) 792-2750  
[www.greatbendks.net](http://www.greatbendks.net)  
[ExploreGreatBend.com](http://ExploreGreatBend.com)

house

r of Commerce

ation Center

ation

on & Visitors Bureau/  
enter

f's Office

e Center of Great Bend



## Shop and Eat in Great Bend



### Unique Shopping

If you long for the great experience of shopping with hometown customer service, check out all the unique boutiques and stores downtown and don't forget the stores on 10th Street. You will find friendly customer service, unique items and prices that won't leave you disappointed. Download a full list of stores from [exploregreatbend.com](http://exploregreatbend.com).

*We have it all...* **HIGH CALL  
OUTFITTERS**



Karen Kane



OUTFITTING YOU IN...  
**Ladies Boutique styles**

**MEN'S WORK & FASHION**

KIDS APPAREL AS WELL...  
**AND OF COURSE...**  
WESTERN & WORK BOOTS  
AND CASUAL FASHION FOOTWEAR

**HIGHCALLOUTFITTERS.COM**

4100 10th street  
GREAT BEND KS



620.796.2355

Explore  
**GREAT BEND**  
*Shop - Stay - Play - Grow*  
[www.exploregreatbend.com](http://www.exploregreatbend.com)



### Dry Lake Brewing

Established in 2019, Dry Lake Brewing set up shop in an old shoe store in the downtown district of Great Bend and hopes to open its doors in the summer of 2020 bringing beers from the lightest of the light to the darkest of the dark. "We hope to be a community hub, where people from all backgrounds and age groups can come enjoy a beverage and good conversation" said Co-Founder Ryan Fairchild. With an open-view Brewhouse, taproom seating and covered patio, Dry Lake Brewing will bring a unique atmosphere to the area. For more information on Dry Lake Brewing visit [DryLakeBeer.com](http://DryLakeBeer.com).

**The Happiest Endings Start at . . .**

**Beautiful Beginnings**  
BOUTIQUE

1519 Main • Great Bend • 620-793-9514  
[www.beautifulbeginningsboutique.com](http://www.beautifulbeginningsboutique.com)  
[facebook.com/beautifulbeginningsboutique](https://facebook.com/beautifulbeginningsboutique)

Twitter Facebook Instagram YouTube

**Run in for All  
Your Bridal Needs**

WEDDING GOWNS  
ALTERATIONS  
SPANX • TUXEDOS

**GREAT BEND COFFEE**  
**MORE THAN COFFEE . . . 64 UNIQUE SALADS,  
WRAPS, QUICHE, SANDWICHES AND  
PIZZA TO DELIGHT EVERYONE.**



Mon. - Fri. 7 am - 3 pm  
Sat. 8 am - 3 pm

Private Parties  
and  
Catering Available

2015 Lakin Ave. • Great Bend, KS • 620-603-6465  
[www.greatbendcoffee.com](http://www.greatbendcoffee.com)



## Shop and Eat in Great Bend



### Rosewood Winery & Wine Cellar

Rosewood Winery is nestled in the rolling plains at Rosewood Ranch, 9 miles west of Great Bend. It is the only winery in the nation that is devoted to providing employment opportunities to people with developmental disabilities. The winery is open Thursday and Friday 1-5 p.m. or by appointment. Groups can also tour by appointment. Rosewood Ranch is home to a nationally acclaimed therapeutic horseriding program and to world-champion horses, for which Rosewood Wines are named.

Rosewood Wine Cellar is more than a wine store. Visiting the Wine Cellar in Downtown Great Bend provides a rustic, ranch-elegance shopping opportunity for customers. Not only can you purchase fine wine, you can build your own gift baskets and fill them full of special products including candles, soaps, jellies, salsas and much more. The Cellar offers more than 30 varieties of wine, free wine tasting while you browse, and unique gifts, including Rosewood Creations Products. Experience a fun and unique shopping experience while supporting employment opportunities for people with disabilities! RosewoodWinery.com & RosewoodWineCellar.com; facebook.com/RosewoodWineCellar.

### Rosewood Winery & Wine Cellar



## Eat in Great Bend

We have a little bit of this and a little bit of that! Enough to cover every craving and you'll get friendly service while you indulge. Be sure to check out our local favorites! Whatever your taste, you are sure to find it here in Great Bend. ♥ = A local option.

### Applebee's Bar & Grill

3209 10th Street

### Arby's

3414 10th Street

### Bookies ♥

619 Main Street

### Braum's Ice Cream & Dairy

3413 10th Street

### Burger King

3929 10th Street

### Chosen Wok

3908 10th Street

### Dairy Queen

2302 Main St.

### Delgado's Mexican Restaurant ♥

2210 10th Street

### Freddy's Frozen Custard & Steakburgers

3008 10th Street

### Gambino's Pizza

1309 10th Street

### Granny's Kitchen ♥

925 10th Street





**Great Bend Coffee Company** ♥

2015 Lakin Avenue

**Great Bend Taco** ♥

3106 10th Street

**Great Wall Super Buffet**

4705 10th Street

**HandleBar & Grill** ♥

807 10th Street

**Kentucky Fried Chicken**

2917 10th Street

**Kiowa Kitchen** ♥

214 E. Barton County Road

**Leann's Diner & Carryout** ♥

2520 10th Street

**Los Dos Potrillos** ♥

2020 Forest Avenue

**Lumpy's Home Field Bar & Grill** ♥

2017 Forest Avenue

**Maria's Mexican Grill** ♥

3212 10th Street

**Mary's Kitchen** ♥

2424 10th Street

**McDonald's**

3307 10th Street

**Mitchell's Bakery** ♥

1110 Main Street

**Mizumi Sushi & Steak**

1318 Kansas Avenue

**Mr. Burger** ♥

281 SE 56 Avenue

**Papa Murphy's Take 'N' Bake Pizza**

3809 10th Street

**Perkins Family Restaurant**

2920 10th Street

**Pizza Hut**

2006 Main Street

4101 10th Street

**Playa Azul Mexican Restaurant****& Cantina** ♥

4909 10th Street

**RePerks Coffee Shoppe** ♥

1216 Main Street

**Scooter's Coffee**

3501 10th Street

**Sonic Drive-In**

3909 10th Street

**Starbucks in Dillons**

4107 10th Street

**Subway**

2723 10th Street

3503 10th Street

**Taco Bell**

3706 10th Street

**Thai Classic Restaurant** ♥

30 S Patton Road

**The Page: An American Bistro** ♥

2920 10th Street

**The Rack Billiard Café** ♥

3220 Railroad Avenue

**Walnut Bowl** ♥

3101 Washington Street

**Wendy's**

3519 10th Street



4701 10TH Street  
Great Bend, Kansas 67530  
**620-792-8235**  
**800-DAYS INN**  
[www.daysinn.com](http://www.daysinn.com)



**48 ROOMS**  
3200 10TH Street  
Great Bend, Kansas 67530  
620-792-7219 • 620-792-1382 Fax  
For Reservations: 800-578-7878  
[www.travelodge.com](http://www.travelodge.com)

**Delgado's**  
MEXICAN RESTAURANT  
Beaver & Terri Delgado, Owners  
Dine-in, carry-out, catering or book your private parties on the weekends.

**HOURS**  
MON-FRI  
11-2pm, 5-8:30pm  
620-793-3786  
2210 Tenth  
GREAT BEND,  
KANSAS

**KIOWA KITCHEN**  
Mexican Restaurant  
"Best Mexican Food in the Country!"  
Open 11:00am - 9:00pm  
Thursday, Friday & Saturday  
214 E. Barton County Rd.  
Great Bend  
**620-793-9855**



# Stay in Great Bend

Explore  
GREAT BEND  
Shop - Stay - Play - Grow  
[www.exploregreatbend.com](http://www.exploregreatbend.com)



## Baltzell Lodge

705 10th Street • (620) 792-4395

<http://www.baltzelllodge.com>

Quiet and quaint motel rooms and cottages available. Newly renovated to give you a 5-star stay at a 1-star price.



## Best Western Angus Inn

2920 10th Street • (620) 792-3541 • <http://bwangus.com>

Clean, comfortable hotel with handicap accessible rooms/suites. Facilities include indoor pool, hot tub, sauna, exercise room, gaming area and large courtyard.



## Days Inn

74701 10th Street • (620) 322-4068

<https://www.wyndhamhotels.com/days-inn/great-bend-kansas/days-inn-great-bend/overview>

As a guest, you can expect warm hospitality and clean, comfortable rooms where everything works, to make your stay trouble-free and enjoyable.



## Holiday Inn Express & Suites

3821 10th Street • (620) 603-3535

<https://www.ihg.com/holidayinnexpress/hotels/us/en/great-bend/gbdes/hoteldetail>

Bright, modern hotel offers spacious rooms, indoor pool, jacuzzi, fitness center, business center, and breakfast buffet. Meeting/banquet rooms are available.



## BEST WESTERN Angus Inn

"Rooms for Every Occasion"

- Indoor Pool • Large Indoor Courtyard
- Honeymoon Suites • NETFLIX in every room
- Fridge, Microwave, Coffee Maker, Flat Screen TV's and Blue Ray Players in Every Room • FREE Wi-Fi

Call: 800-862-6487 FOR RESERVATIONS



## Perkins Family Restaurant

"Breakfast, Dinner & Everything in Between"

- Full Service Bakery • Serving Breakfast All Day
- Banquet & Meeting Rooms

Call: 620-792-4386 - 2920 10th Street



## The Page

"An American Bistro Bar & Grill"

Sunday - Thursday 11:00am - 10:00pm  
Friday & Saturday 11:00am - 11:00pm  
• Banquet & Meeting Rooms • Wi-Fi Hot Spot  
Call: 620-792-8700





### Quality Inn

3500 10th Street • (620) 793-8486

<https://www.choicehotels.com/kansas/great-bend/quality-inn-hotels/ks184>

This hotel has great rooms and amenities like free, hot breakfast, indoor pool, free newspaper, and much more!



### Super 8

911 Grant Street • (620) 793-9000

<https://www.wyndhamhotels.com/super-8/great-bend-kansas/super-8-great-bend/overview>

Staff is there to welcome you with free continental breakfast, indoor pool, exercise room, suites/handicap accessible rooms, and bus/truck parking available.



### Traveler's Budget Inn

4200 10th Street • (620) 793-5448

<http://travelersbudgetinn.net/>

Feel at home in spacious rooms with all the luxuries that you could need in a reasonably priced space.



### Travelodge

3200 10th Street • (620) 603-0963

<https://www.wyndhamhotels.com/travelodge/great-bend-kansas/great-bend-travelodge/overview>

Kick off your stay at the Travelodge. The hotel offers convenient parking, continental breakfast, and spacious guest rooms with many amenities.

## OTHER GREAT BEND LODGING:



### The Farm House

Lodging Rental • (620) 793-0245

<https://www.facebook.com/GreatBendFarmhouse/>

Located in the country close to Great Bend, this 3,000 square foot home offers four bedrooms, two bathrooms, and a home away from home! Perfect for hunters or any groups of 8.



### The Sunflower House

Airbnb Rental • (785) 798-7932

Download AirBnB app [www.airbnb.com/SearchTheSunflowerHouse](http://www.airbnb.com/SearchTheSunflowerHouse)

Found in a quiet neighborhood and fully renovated, this a great option for staying in Great Bend! Lots of natural lighting and room to cook, watch a movie, or visit in the spacious back yard!



### Central Kansas Whitetails

656 W Barton County Road

(620) 786-4064

<https://www.ckwhitetails.com/>

This hunting lodge includes a great room complete with a living room, large dining room, full kitchen, four bedrooms, and two and a half baths. There's also a great shop ready to hang and dress a deer!



### Kansas Trophy Experience

54 SE 10 Road • (620) 617-4197

<https://www.facebook.com/KansasTrophyExperience>

A hunting lodge that offers sleeping space for eighteen plus five and a half baths is just minutes from down town Great Bend! Includes a great room and full kitchen.



## Play in Great Bend



**Play in Great Bend**

We invite you to come play in our community when you're looking for a destination to rejuvenate and motivate your crew! With unique play features, ideal spaces, open areas and updated equipment, we pride ourselves on our parks for fun recreation and adventures!



**Wetlands Waterpark**

The perfect way to cool off in the summer is the Wetlands Waterpark! With eight water slides, spray features, concessions and plenty of shade, our waterpark is just as great as big city waterparks for a fraction of the cost! The Waterpark opens each year on Memorial Day Weekend and is open seven days a week from 12:30 pm to 5:30 pm. Family Swim Nights are held on Tuesdays and Thursdays from 7:00 pm to 9:00 pm. Two years of age and under are always FREE! The Great Bend Recreation Commission is happy to offer swimming lessons and other aquatics programs for children of all ages. The facility is also available

for groups wishing to hold private parties. For more information, please contact the Wetlands Waterpark at 620-792-1516 or visit [greatbendwaterpark.com](http://greatbendwaterpark.com).

### Wetlands Waterpark



**Great Bend Sports Complex**

Great Bend's Sports Complex has a long, proud history when it comes to baseball and softball. The facility contains five fields for all levels of ballplayers, with adjustable fencing, plenty of shade and beautiful atmosphere. Its South McKinley St. location keeps it close to 10th Street restaurants and shopping. Great Bend hosts major tournaments during the year, and





GREAT BEND  
REC

# UNITED *in* PLAY



**www.  
great  
bend  
rec**  
620.793.3755



My BackYard Playground  
Veteran's Toddler Playground  
GB Fit Trail  
GB Musical Park  
GB Sports Complex  
Tournaments  
Wetlands Aquatic Park  
GB Disc Golf Course



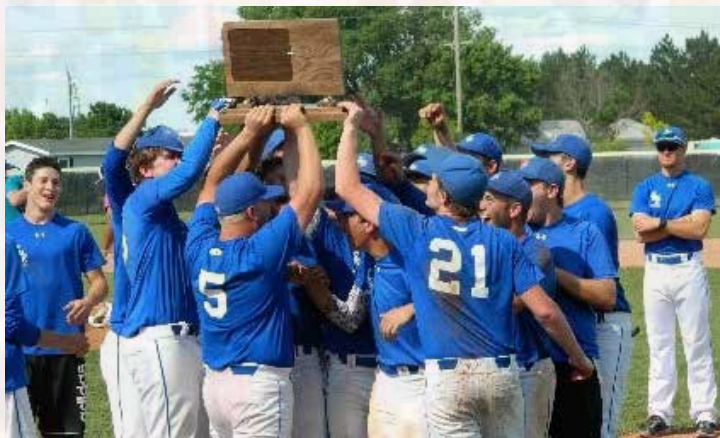
## Play in Great Bend

Explore  
GREAT BEND  
Shop - Stay - Play - Grow  
[www.exploregreatbend.com](http://www.exploregreatbend.com)

### Great Bend Sports Complex

we are proud hosts of the KCAC Baseball and Softball League Championships as well as the KSHSA 2-1A State Baseball Championship! The complex is the home of the Great Bend Panthers, the Great Bend Bombers, Great Bend Quicksilver, Great Bend Rec Leagues and hosts a variety of USSSA Softball, Hap Dumont Points Tournaments and American Legion Leagues! To get the full schedule or rent the facility, contact the Great Bend Recreation Commission at 620-793-3755 or visit [greatbendrec.com/facilities/sports-facilities/](http://greatbendrec.com/facilities/sports-facilities/).

### Great Bend Sports Complex



### KCAC Championship

The **Kansas Collegiate Athletic Conference (KCAC)** is an intercollegiate athletic conference affiliated with the NAIA. The KCAC is the oldest conference in the NAIA and the second oldest in the United States, tracing its history to 1890. The KCAC has selected the Great Bend Sports Complex to host its Baseball and Softball League Championships.



### KHSAA 2A - 1A State Baseball

**Kansas High School Activities Association**, a private/non-profit association of accredited member schools has selected the Great Bend Sports Complex to host the 2A-1A State Baseball Tournaments.



### Great Bend Batcats

#### Al Burns Field – Home of the Great Bend Batcats!

The Great Bend Batcats is our local semi pro baseball team that plays in the Jayhawk League, one of the most competitive leagues in the nation. The Jayhawk League has teams in two Midwestern states in the heartland of America, Kansas and Oklahoma. The Batcats play in June and July each year! This field is located at West 17th St. Terrace and is used by the Panthers, Leagues and Recreation Commission for other great ball tournaments! To learn more about our local Batcats go to [www.batcats.com](http://www.batcats.com)





### **Imagination Playground & My BackYard Playground**

A Fun-Family experience that keeps children and families coming back. Enjoy the two most popular Family-Friendly playgrounds in Great Bend, hosted by the Great Bend Recreation Commission.

My BackYard Playground brings children of all ages and abilities together in a play environment that welcomes kids and families of all abilities to learn, play, be inspired by nature, and to grow. Children who like speed will love our slides and ZipKrooz, while those wanting to play at their leisure will enjoy spinners, net climbers, or stroll through the sensory flower gardens. The playground even includes musical instruments for children wanting to activate their creative senses, plenty of shade for parents and a water play feature. In conjunction with My BackYard, the Imagination Playground offers a pleasant environment for those wanting an indoor experience. The facility comes complete with large foam bricks and cylinders, accented with chutes and channels. This playground allows children to get creative through role-playing and even construction. Available for use on the first and third Wednesdays of each month, from 9:00 to 11:00 am, and 6:30 to 7:30 pm in the Great Bend Activity Center. For more information, visit the [greatbendrec.net](http://greatbendrec.net) or contact the Rec at 620-793-3755 for more information.

## **Great Bend Parks & Picnic Areas**

(Open Sunrise to Sunset)

- By-Pass Park/Harms Ball Field – US-281 Hwy Bypass
- Eisenhower Elementary School Park – 1212 Garfield St.
- Great Bend Brit Spaugh Park – 2123 Main St.
- Great Bend Sports Complex – 41 McKinley St.
- Heizer Park – 8th & Heizer St.

- Jack Kilby Square – 1400 Main St.
- Jefferson Elementary School Park – 2716 24th St.
- K-96 Park – 10th & K-96 Hwy.
- Lincoln Elementary School Park – 5630 Broadway Ave.
- My Backyard Playground – 2715 18th St.
- Park Elementary School Park – 1801 Williams St.
- Riley Elementary School Park – 1515 10th St.
- Santa Fe Trail Park – 10th & Frey St.
- Stone Lake – South Washington St.
- Veterans Memorial Park & Al Burns Field – 17th St. Terr.



### **Big Bend Bowhunters**

A bow range in Great Bend that offers a great space for all ages to practice bow hunting, as well as compete in competitions throughout the year. Become a member or enjoy with the group for a day! 2nd Street & Kiowa Road • (620) 639-1603 • [www.facebook.com/Bigbendbowhunter](http://www.facebook.com/Bigbendbowhunter).



### **Motocross Track Racing at Great Bend Expo Complex**

Motocross Track Racing at Great Bend Expo Complex: The GBMX Park is also home to the Hahn Brothers Supercross Shootout. Held every September, the Shootout attracts professional riders to race for a grand cash prize. Brothers Tom and Wil Hahn proudly sponsor this race for professional riders and locals from the neighboring counties. To schedule rides, join a practice date or for more information, [gbmxpark.com](http://gbmxpark.com) or call 620-792-9914.



## Play in Great Bend



### Bike Trails

Explore the trails of Great Bend! Whether your biking or walking, we have over 13 different trails with 17 different points of interest! The Trans-America Bike Trail goes right through town and highlighted features include our Paved Hike and Bike Trail, the Arkansas River, Cheyenne Bottoms and Lake Barton. We have over 400 miles of paved blacktops that make it ideal for bikers. For more information or a map visit, [www.ckpartnership.org/bike](http://www.ckpartnership.org/bike).



### Fun in Fitness

Our town has many options for fitness lovers. Great Bend's fitness centers offer varieties of equipment and even personal trainers to help you reach your fitness goals. We also have many free outdoor opportunities for you to get fit and enjoy nature. Be sure to check out our Hike & Bike Trail the main entrance is by Stone Lake, or at Veteran's Memorial Park on the North Side of the lake, which also now features The Fit Trail equipment – a cluster of 11 pieces of strength & cardio exercise equipment. Whether you want to get fit on your own or in a gym, you will find many opportunities for fitness in Great Bend.



### Free-Outdoor Movies

Each year the City and Waters Hardware pair up to provide a summer movie series for FREE for visitors and citizens. One movie a month is featured using the Bandshell and big screen, where attendees can bring their blanket or lawn chair and enjoy with Free Popcorn and drink! To see the summer's list of movies and dates, go to Explore Great Bend on Facebook and search under Outdoor Movie Events and come enjoy the show this summer!



### Great Bend City Band Concerts

Great Bend has been known as having talented band members, which tradition goes back to 1875. Every summer, 40 to 50 instrumentalists gather to entertain audiences. The concert series is hosted on the Thelma Faye Harms Stage of the Moses Bandshell at Jack Kilby Square. And when it gets entirely too hot, the concerts are moved inside the Great Bend Community Theatre. Each concert is free of charge and the community loves this favorite summertime tradition! See the band schedule at Explore Great Bend on Facebook.





### Hunting

For many across the United States, Great Bend is a primary destination for waterfowl and deer hunting. Nestled between the Cheyenne Bottom Wildlife Area and the Quivira National Wildlife Refuge, Great Bend is surrounded by open vastness perfect for a morning hunt. Great Bend is also home base for many guide services that specialize in providing the perfect hunting experience. Whether for leisure or sport, hunters will find a wonderful home in the areas around Great Bend.

### Hunting



### Ride The River

When the weather is warm, the local ATV & UTV drivers can all be found on the Arkansas River. Groups ride the trails up and down the river banks just south of Great Bend. Rides for our river should not be done solo, groups are best for safety through deeper parts. Entry is at Stone Lake and riders are asked to keep all areas clean and free from hazards!

**WELCOME TO TOWN**  
*"For the Biggest Room At Your House"*

**Eldridge FENCING**  
**Residential & Commercial**

*"Country Estate Vinyl Fence"  
 Deck and Handrails*

**Also Available**

- Decks
- Porches
- Arbors
- Porch Railings
- Picnic Tables
- Gazebos
- Privacy
- Lattice
- Ranch Rail

**COUNTRY MANOR**  
 FENCE & RAILINGS

**COUNTRY ESTATE**  
 FENCE, DECK & RAILINGS

**TRAEGER**  
 WOOD PELLET GRILLS

**Primo**  
 CERAMIC GRILLS

Authorized Independent Distributor of  
 Country Estate Vinyl Fence Products

**620-793-7970**

80 10th Street • Great Bend, KS  
[www.eldridgefencing.com](http://www.eldridgefencing.com) [wally@ruraltel.net](mailto:wally@ruraltel.net)

**WESTERN KANSAS FENCE SUPPLY**  
**WHOLESALE AVAILABLE 888-637-3723**

**KANSAS TROPHY**  
 THE SPORTSMAN'S CLUB

- Overnight Rentals
- Event Rentals
- Large Shop Area
- Sleeps 18 Comfortably
- 2 Living Rooms
- Full Kitchen
- 5.5 Bathrooms
- Large Great Room
- Dog Runs/Kennel
- Game Cleaning Area

54B SE 10 Road  
 Great Bend, KS 67530

Phone number: Billy 620-617-4197





### SRCA Dragstrip

Great Bend's historic SRCA Dragstrip spans decades. Starting in 1955 with the NHRA National Event, the strip has hosted several drag races and attracted thousands every year. Mark your



calendar to watch the racers zoom down the strip from March to October! Visitors will enjoy the thrill of the races, along with commodities provided by a local concession stand. For more information and the full schedule of events, find our amazing crew on Facebook or at srcadragstrip.com.

## Explore GREAT BEND

Shop - Stay - Play - Grow

[www.exploregreatbend.com](http://www.exploregreatbend.com)



Kayla Peterson, D.V.M.  
Jon Briel, D.V.M.



### Ark Valley Veterinary Hospital

Compassionate Affordable Care



1205 Patton Road  
Great Bend, Kansas 67530  
Hours: Mon.-Fri. 8 a.m. to 6 p.m., Sat. 8-12 a.m.  
**(620) 793-5457**  
(Phone Answered 24 Hours)

**Mailing Address**  
Sunflower Rod & Custom Association, GB  
P.O. Box 1362  
Great Bend, KS 67530  
620-792-5079 (track phone)

**Track Address**  
455 W. Barton County Rd  
Great Bend, KS 67530

**Drag on the strip, not on the street!**

**COUNTRYSIDE VETERINARY ASSOCIATES**

Dr. William R. Niederee  
Dr. Sandi G. Hayek  
Dr. Gina M. VanLoenen

Call For An Appointment  
**Mon-Fri 8 to 6 - Sat 8 to 12**  
**24 HOUR EMERGENCY SERVICE**

**620-792-2551**

2900 N. Main • GREAT BEND  
[www.countrysidevetgb.com](http://www.countrysidevetgb.com)

**First Kansas Bank**

Hoisington • Claflin • Great Bend • Hays

4001 10th Street  
Great Bend, Kansas 67530

620-793-7005 1-888-793-3439 FAX 620-793-7558  
[www.firstkansasbank.com](http://www.firstkansasbank.com)

**OUR STRENGTH IS YOUR SECURITY**

P.O. Box 247

**FDIC**



## Explore in Great Bend



**Great Bend Brit Spaugh Zoo**

The Great Bend Brit Spaugh Zoo is a local treasure that attracts thousands of visitors each year. Established in 1952, the zoo initially started with a bear and Kansas-born animals. Today, it proudly showcases exotic animals from all around the world. Lions, gibbon monkeys and alligators regularly make themselves known with their bellowing every morning. Also, among the must see, is our new Lion Pride, Thurston our Owl that clucks like a chicken and the newly renovated Grizzly Bear & Bison Exhibits! This facility is open year-round and is one of the few zoos in the state with free admission. Though Great Bend's zoo is small in comparison to others, it is the town's favorite centerpiece. We pride ourselves on our close encounters, friendly animals and the perfect place to stroll through and enjoy at all ages. Visit the gift shop for one of a kind treasures to take home and enjoy. For more information, visit [greatbendzoo.com](http://greatbendzoo.com), or call 620-793-4226.

**Great Bend Brit Spaugh Zoo**



**Kansas Wetlands Education Center**

KWEC is located on K-156 just 10 miles northeast of Great Bend - offers exhibits, programs, and year-round staff to educate visitors on one of the most important marshlands in the world. Options are available for tourists who want to explore the Bottoms on foot or wheels. Bird-watchers and hunters are encouraged to stop here for the current reports on the birdlife that makes the Bottoms their home. Catch the spring or fall migrations as thousands of waterfowl and shorebirds make a pit stop at Cheyenne Bottoms. Even exotic birds from afar, such as whooping cranes, can be observed during their journey south. Free admission! For more information, visit [wetlandscenter.fhsu.edu](http://wetlandscenter.fhsu.edu) or call 1-877-243-9268.



**Birdwatching**

The outskirts of Great Bend are the perfect location for birdwatching as we are nestled between Cheyenne Bottoms and Quivira National Wildlife Refuge, wetland complexes of global importance to



## Bird Watching

migratory waterfowl and shorebirds. The wetlands host significant percentages of worldwide populations for at least 10 species of shorebirds, and nearly 200 species of birds can be recorded in the area during spring migration. So, if you have a bird on your bucket list, we invite you to give our more than 45,000 acres of inland marshes a visit!



**Cheyenne Bottoms &  
Quivira National Wildlife Refuge**

Cheyenne Bottoms is the largest marsh in the interior of the United States and was designated a Wetland of International Importance in 1988 by the Ramsar Convention on Wetlands, one of two sites in the state - the other being Quivira National Wildlife Refuge. The area is considered the most important shorebird migration point in the western hemisphere. You may access the wetlands via any of three different entrances - north (K-4 highway), southeast (K-156 highway) or west (US 281 highway). Visitors to Cheyenne Bottoms could stop at the Kansas Wetlands Education Center or one of these kiosks for maps, checklists, and a driving tour booklet. The driving tour booklet comes with an audio tour that describes thirteen points of interest along the drive through Cheyenne Bottoms, which are accompanied by interpretive signage. You can also get the files at the Wings & Wetlands National Scenic Byway Website. By following the tour, visitors get a better understanding of the significance of the area as well as the complexity of managing a wetland resource with limited water. In times of severe drought, the Bottoms may go completely dry.



**Wetlands & Wildlife National Scenic Byway**

The Wetlands & Wildlife National Scenic Byway offers visitors much to see in nature and much to do among the communities lining it. As the 77-mile route connects Cheyenne Bottoms with the Quivira National Wildlife Refuge, travelers will be immersed in the heart of America and the Central Flyway. Every community along the highway offers the kind of hospitality found only out in Kansas. For more information, [kansaswetlandsandwildlifescenicbyway.com](http://kansaswetlandsandwildlifescenicbyway.com).



- **Nature Programs**
- **Museum**
- **Gift Store**
- **Tours**
- **Live Animals**

**Visit the new hands-on exhibits at the Kansas Wetlands Education Center**

- Augmented reality watershed simulator
- A one-of-a-kind wetland floor projection game
- Wetland children's activity area
- Build-a-bird and build-a-plant stations
- Aquatic invertebrate viewer

KANSAS WETLANDS EDUCATION CENTER • 592 NE K-156 Highway, Great Bend, KS 67530  
<http://wetlandscenter.fhsu.edu/> • 1-877-243-9268





### **Barton County Historical Society**

Located south of Great Bend on US 281 Hwy, the Historical Society seeks to preserve both Great Bend and Barton County's heritage. In addition to vital documents and artifacts, the Society also includes a fully furnished Lustron Home and an authentic Lutheran Church, among many other structures. Many locals remember the Polar Bears from the '80s from our Zoo; well, you can still see one of the mounted bears on display at our historical society.

Hours: April-October – 10 am to 5 pm (Tuesday-Friday), 1 pm-5 pm (Saturday and Sunday). November-March – 10 am to 5 pm (Tuesday-Friday) For more information, call 620-793-5125!



### **Kansas Oil & Gas Hall of Fame & Museum**

Great Bend is historically known as a Kansas Oil Town. The Kansas Oil & Gas Hall of Fame Museum on 5944 10th St. is a wonderful stopping point for anyone wanting to know how this vital resource put Great Bend on the map. Highlights include the Hall of Fame for local pioneers of the industry, an Education Center with hands-on displays, and a Conference Center that is available for rent. This facility has different winter and summer hours, so be sure to call 620-793-8301 for more information or visit the facility's Facebook page.



### **B-29 Memorial**

Great Bend was once home to an important airbase during World War II. Here, pilots trained on the B-29 Superfortress for missions over the Pacific. Today, an open-air memorial honors the pilots who flew and worked on the bombers over Great Bend. This memorial features a stainless-steel display of a B-29, along with bronze plaques and inscribed bricks, honoring crews and individuals who set foot on the airbase. For more information, contact the Barton County Historical Society, 620-793-5125.



### **Gus & Eva Shafer Memorial Art Gallery**

Often referred to as the "Gem of the Campus", the Shafer Art Gallery of Barton Community College attracts visitors from across the country every year. This gallery boasts 8,000 square feet of space, which holds traveling works and original sculptures of Gus Shafer. Local, regional and nationally known artists regularly have their works showcased in this gallery each month. The Shafer Art Gallery also features studio workshops, seminars, and other activities to help young artists find their craft. Visitors will find the gallery in the Fine Arts Building on campus, and admission is free. Hours: 10 am to 5 pm, Monday through Saturday.





### Metal Works - Bronze Sculptures

Great Bend is an art-friendly town. Whether walking, cycling or driving, you are bound to come across a piece of original artwork crafted by a local artist. Among the prides of Great Bend are several sculptures and bronzes crafted to reflect the town's pastimes and celebrations of life.

Metal and Bronze pieces include:

- Remember When – 16th & Main
- Dream Big – Main & Lakin
- Bucket List – Kansas & Lakin
- Jack Kilby and the Gift – Main & Forest
- Daydreams – 18th & Adams
- Breaking the Prairie Sod – 10th & K-96
- Great Bend Sports Complex – South McKinley

For more information, visit [exploregreatbend.com](http://exploregreatbend.com) or call 620-792-2750.



### Downtown Quilt Walk/Tour

In the sidewalks around Jack Kilby Square are several quilts that reflect Great Bend's history. Every quilt has a unique background and links to Great Bend in several ways. To learn more, stroll through the square and compare the quilts with the real replicas at the Barton County Historical Society. Be sure to see the City's first official Barn Quilt on the South Side of the Bandshell in Jack Kilby Square. This barn quilt is one of many listed on the National Barn Quilt Tour. Great Bend participated by featuring a Kansas Sunflower

along with the other June Jaunt communities along Kansas Highway 96 from Ellinwood to Tribune. For more information or to get a copy of the Quilt Tour Brochure, [www.exploregreatbend.com](http://www.exploregreatbend.com)



### Heartland Farm

Operated by the Dominican Sisters of Peace, this farm offers retreats and classes for those wanting to learn about ecojustice. The facility also operates trails, labyrinths, and picnic areas to help visitors get in touch with nature. The pride of the Heartland Farm can be found with a herd of alpacas that help with day-to-day functions. For more information, contact the farm at (620) 923-4585.



### Great Bend Community Theatre

Located in Great Bend's historic building listed in the National Register of Historic Places. Also called the Crest Theatre – originally opening in 1950 – operated as a movie theater for decades. Today, it serves as a performance outlet for local actors and actresses. Every year, the Crest holds three to four performances, along with a few other special events. This theatre is also available for rent. For more information, visit [gbct.net](http://gbct.net), the Crest's Facebook page, "Great Bend Community Theatre" or call 620-792-4228.



# GREAT BEND

## CHAMBER OF COMMERCE

1125 Williams Street  
Phone: 620-792-2401  
Email: [marketing@greatbend.org](mailto:marketing@greatbend.org)

## WELCOME TO GREAT BEND!

On behalf of our 600+ Chamber members, we want to welcome you to Great Bend! Whether you're just stopping by, or staying a while, we hope you'll check out the shopping Great Bend has to offer as well as many exciting attractions!



## EVERYTHING YOU NEED TO KNOW.

Great Bend is a vibrant community of more than 16,000 people located in the heart of America. Find out everything you need to know about attractions, events, job opportunities, and business features!

[www.greatbend.org](http://www.greatbend.org) 

 **SHOP  
LOCAL**  
**GREATBEND.ORG**



Shop Our  
**MEMBERS**



Shop Our  
**ONLINE DIRECTORY**



Find Out  
**WHAT'S HAPPENING**



## ROSEWOOD WINE CELLAR

Open Monday - Saturday

**The Most Unique Shopping  
Experience You Will Find!**

**Unique Gifts & Local Products**

Bath, Candles, Honey, Jellies, Salsas, and more



**Free Wine  
Tasting  
While You  
Browse**

**Support Employment  
for People with  
Developmental Disabilities**

1901 Lakin, Great Bend  
620-603-6410  
[RosewoodWineCellar.com](http://RosewoodWineCellar.com)  
[fb.com/RosewoodWineCellar](https://fb.com/RosewoodWineCellar)



**Quality Handcrafted  
Hardwood Furniture**  
New Merchandise! • New Finishes!

Farmhouse Finishes  
Elegant Table Cloths  
Gifts for Children  
Home Décor  
Porcelain Dolls  
Blanket Throws

**ROSEWOOD FURNITURE  
GALLERY**

### **Your Purchase Matters**

All furniture pieces are pre-cut by the factory, then sanded, stained, varnished and assembled by Rosewood Services workers under expert guidance and care.

Your purchase helps support employment opportunities for individuals with developmental disabilities.



**ROSEWOOD FURNITURE GALLERY**  
1607 Main Street, Great Bend • 620-793-8599  
Open Monday-Friday - Saturdays Nov.-Dec.  
[RosewoodFurnitureGallery.com](http://RosewoodFurnitureGallery.com)  
[fb.com/RosewoodFurnitureGallery](https://fb.com/RosewoodFurnitureGallery)



**SHAFFER  
ART GALLERY**

### **HOURS**

Monday through Saturday  
10 a.m. - 5 p.m.

[gallery.bartonccc.edu](http://gallery.bartonccc.edu)

- Contemporary Arts and Traveling Exhibits
- Gus Shafer Western Bronze Collection
- Interactive Educational Displays and Activities

**BARTON**  
COMMUNITY COLLEGE

245 NE 30 RD • Great Bend, KS 67530

Non-discrimination Notice: Barton Community College is an equal opportunity provider and employer. Visit [equal.bartonccc.edu](http://equal.bartonccc.edu) for more information.



# Even growers and producers get delayed by fevers, sneezes, cuts or sprains.



## Convenient Care Walk-In Clinic

St. Rose Medical Pavilion  
3515 Broadway Ave.  
Great Bend, KS 67530  
620-792-2511

Monday-Friday: 7 a.m.-7 p.m.  
Saturday-Sunday: 9 a.m.-5 p.m.

Get quality care right away for a minor illness or injury.

- Experienced providers who are committed to caring for this community
- Extended hours
- Lab and occupational health services

---

Learn more at [kansashealthsystem.com/strose](https://kansashealthsystem.com/strose).

---



THE UNIVERSITY OF  
KANSAS HEALTH SYSTEM