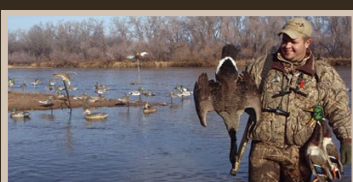
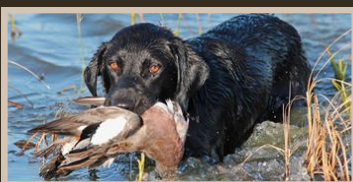
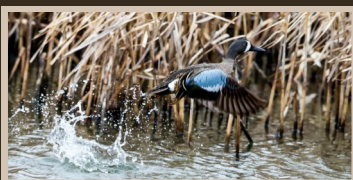
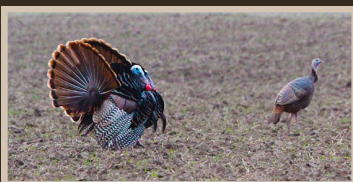


GREAT BEND KANSAS

WINTER 2019



HOTELS



Baltzell Lodge
705 10th St.
(620) 792-4395

Cleaning
Station
Available



**Best Western
Angus Inn**
2920 10th St.
(620) 792-3541

Cleaning
Station
Available



Days Inn
4701 10th St.
(620) 792-8235



**Holiday Inn
Express**
3821 10th St.
(620) 603-6565



Quality Inn
3500 10th St.
(620) 793-8486



Super 8
911 Grant St.
(620) 793-9000



**Traveler's
Budget Inn**
4200 10th St.
(620) 793-5448

Cleaning
Station
Available



Travelodge
3200 10th St.
(620) 792-7219

THE CITY OF
GREAT BEND

CONVENTION & VISITORS BUREAU

3111 10th Street
Great Bend, KS 67530
(620) 792-2750

www.visitgreatbend.com

LICENSE & PERMIT AGENTS

Barton County Clerk Sutherlands

1400 Main St.

Room 202

(620) 797-9957

5520 10th St.

(620) 792-2900

P&S Security

255 W Barton Co. Rd.

(620) 796-2133

Wal-Mart

3503 W 10th St.

(620) 792-3632

Smokin' Aces

268 S Hwy US-281

(620) 603-6034

SUPPLIES

BIG Wings

1201 Polyantha

(316) 393-6890

(620) 797-9957

P&S Security

255 W Barton Co. Rd.

(620) 796-2133

Shooter Supply

1108 Main St.

(620) 792-3818

Gunslinger

Mercantile

2407 10th St.

(620) 793-4867

Smokin' Aces

268 S Hwy US-281

(620) 792-2585

Hibbett Sports

3709 10th St.

(620) 603-6034

Sutherland

5520 10th St.

(620) 792-2900

**Magnus Outdoor
Products**

*Broadhead Manufacturer Only

800 Washington St.

(620) 793-9222

**Tractor Supply
Company**

3709 8th St.

(620) 792-5500

Orscheln

Farm and Home

5320 10th St.

(620) 792-7700

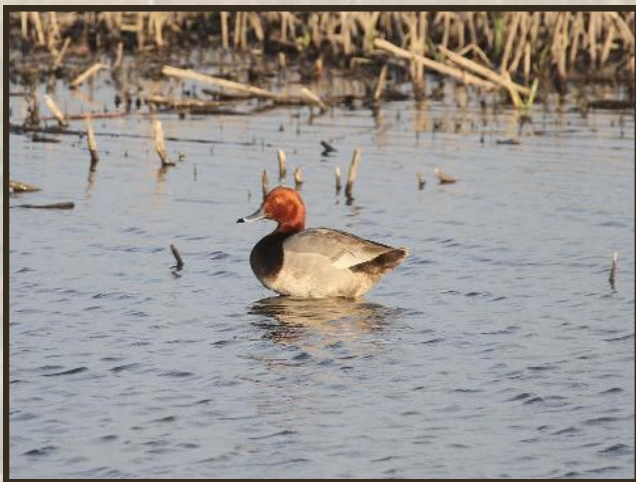
Wal-Mart

3503 W 10th St.

(620) 792-3632

YOUR PERFECT HUNTING DESTINATION

Nestled in between
Cheyenne Bottoms Wildlife Area
and Quivira National Wildlife
Refuge, and surrounded by ample
public Walk-In Hunting Areas
within a 60 mile radius,
Great Bend is a great hunting
destination for you to explore.



With diverse waterfowl and
upland game in the area
and plenty of lodging and
dining options, Great Bend is the
perfect fit for you this
hunting season!

**COME FOR THE HUNTING.
STAY FOR THE HOSPITALITY**

SEASONS SAMPLE

Dove

09/01/19-11/29/19
Daily Bag Limit:
Varies by Species
Possession Limit:
Varies by Species

Dark Goose

10/26-27/19;
11/06/19-02/16/20
Daily Bag Limit: 6
Possession Limit: 18

Deer

Archery Season:
09/16/19-12/31/19
**Regular Firearm
Season:**
12/04/19-12/15/19

Duck

Early Zone:
10/12/19-12/08/19;
12/14-29/19
Late Zone:
10/26/19-12/29/19;
01/18-26/20
Daily Bag Limit:
6 (species vary)
Possession Limit:
Three times the daily
bag limit



Light Goose

10/26-27/19;
11/06/19-02/16/20
Daily Bag Limit: 50
Possession Limit:
Unlimited

Pheasant

11/09/19-01/31/20
Daily Bag Limit:
4 cocks

Quail

11/09/19-01/31/20
Daily Bag Limit:
8 single species or
in combination

Sandhill Crane

11/06/19-01/02/20
Daily Bag Limit: 3
Possession Limit: 9

Special Teal

09/14-29/19
Daily Bag Limit: 6
Possession Limit: 18

Turkey

**Regular Fall
Archery & Firearm
Season:**
10/01/19-12/03/19;
12/16/19-01/31/20
**Both Seasons'
Limit:** 1 turkey,
either sex, per
permit

HUNTING GUIDE SERVICES

**Central Kansas
Whitetails**
656 W Barton Co. Rd.
Great Bend, KS
(620) 786-4064

**Prairie Thunder
Outfitters**
606 NE 110 Ave.
Ellinwood, KS
(785) 252-7217

Innovative Outfitters
6 NE 20 Rd.
Great Bend, KS
(620) 282-2674

Six Star Outfitters
2211 Jackson St.
Great Bend, KS
(620) 282-1561

**No Limits
Kennels, LLC
Hunting**
423 Walnut St.
Heizer, KS
(316) 210-6911
Right photo credit: JC Bosch



CHEYENNE BOTTOMS

**Headquarters/
Check Station:**
204 NE 60 Road
Area Office Phone:
(620) 793-3066

**24 Hour Current
Conditions Phone:**
(620) 793-7730
**Jason Wagner,
Manager**

Don't forget about the iSportmans digital
check-in! Visit kdwpt.isportsman.net to
register or login before your hunt.

For more information or to receive a
copy of the 2019 Kansas Hunting &
Harvesting Regulation Summary or
2019 Kansas Hunting Atlas booklets,
please contact the City of Great Bend
CVB by stopping in 3111 10th Street or
calling (620) 792-2750.

Explore
GREAT BEND
Shop • Stay • Play • Grow